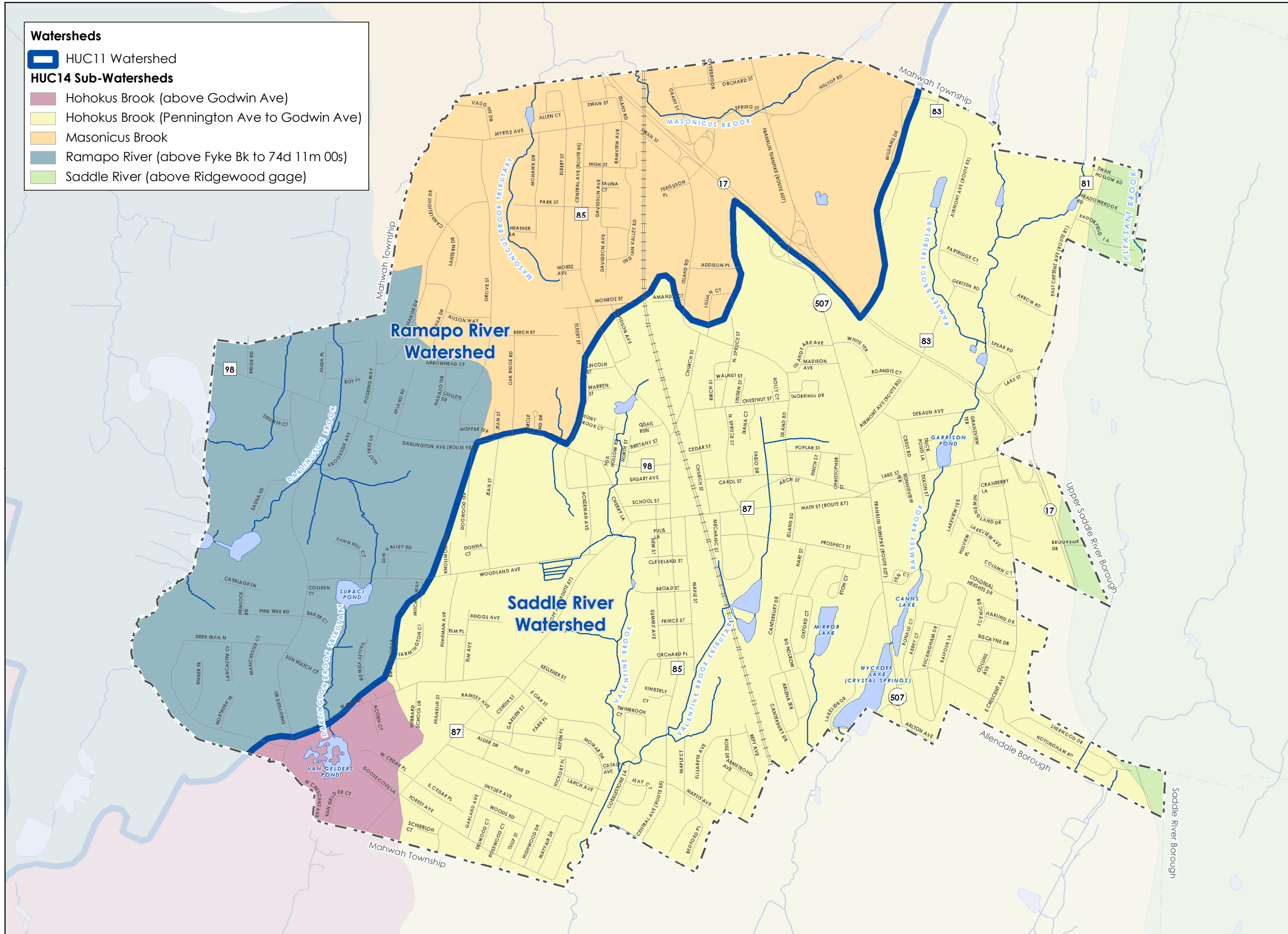


**Watersheds**

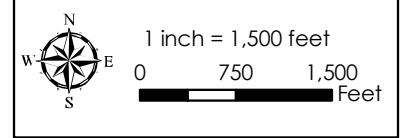
- HUC11 Watershed
- HUC14 Sub-Watersheds**
- Hohokus Brook (above Godwin Ave)
- Hohokus Brook (Pennington Ave to Godwin Ave)
- Masonicus Brook
- Ramapo River (above Fyke Bk to 74d 11m 00s)
- Saddle River (above Ridgewood gage)



**NEW JERSEY COUNTY MAP**



**PH PRINCETON HYDRO, LLC.**  
 1108 OLD YORK ROAD  
 P.O. BOX 720  
 RINGOES, NJ 08551



- NOTES:**
1. Municipal boundaries obtained from New Jersey Geographic Information Network website.
  2. Watersheds (HUCs 11 & 14), streams, and lakes obtained from NJDEP GIS website.
  3. Roads obtained from Borough of Ramsey.
- Map Projection: State Plane New Jersey (feet) NAD83

**MAP 13  
WATERSHEDS**



- Legend**
- Borough of Ramsey
  - Road
  - Commuter Rail
  - Stream
  - Lake
  - Municipal Boundary