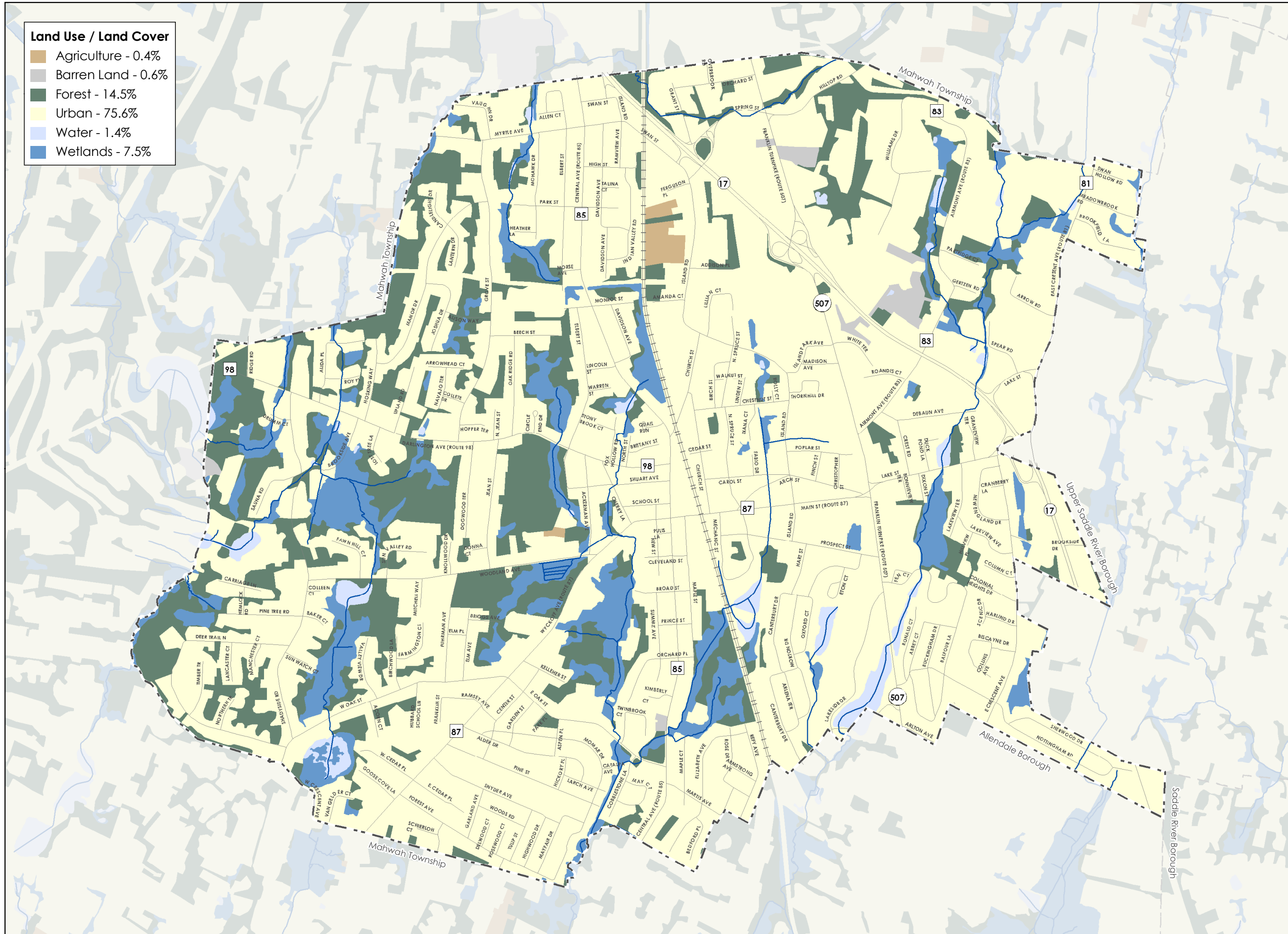
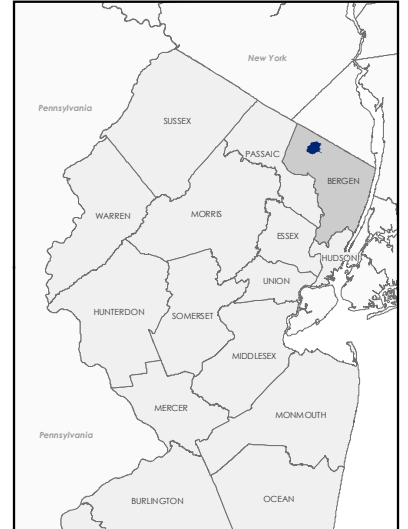


Land Use / Land Cover

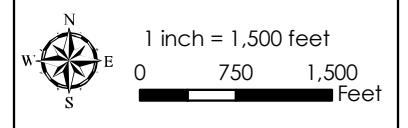
- Agriculture - 0.4%
- Barren Land - 0.6%
- Forest - 14.5%
- Urban - 75.6%
- Water - 1.4%
- Wetlands - 7.5%



NEW JERSEY COUNTY MAP



PH PRINCETON HYDRO, LLC.
 1108 OLD YORK ROAD
 P.O. BOX 720
 RINGOES, NJ 08551



- NOTES:**
1. Municipal boundaries obtained from New Jersey Geographic Information Network website.
 2. Streams, land use/land cover, and lakes obtained from NJDEP GIS website.
 3. Roads obtained from Borough of Ramsey.
- Map Projection: State Plane New Jersey (feet) NAD83

**MAP 7
 2007 LAND USE / LAND COVER**



- Legend**
- Borough of Ramsey
 - Road
 - Commuter Rail
 - Stream
 - Municipal Boundary