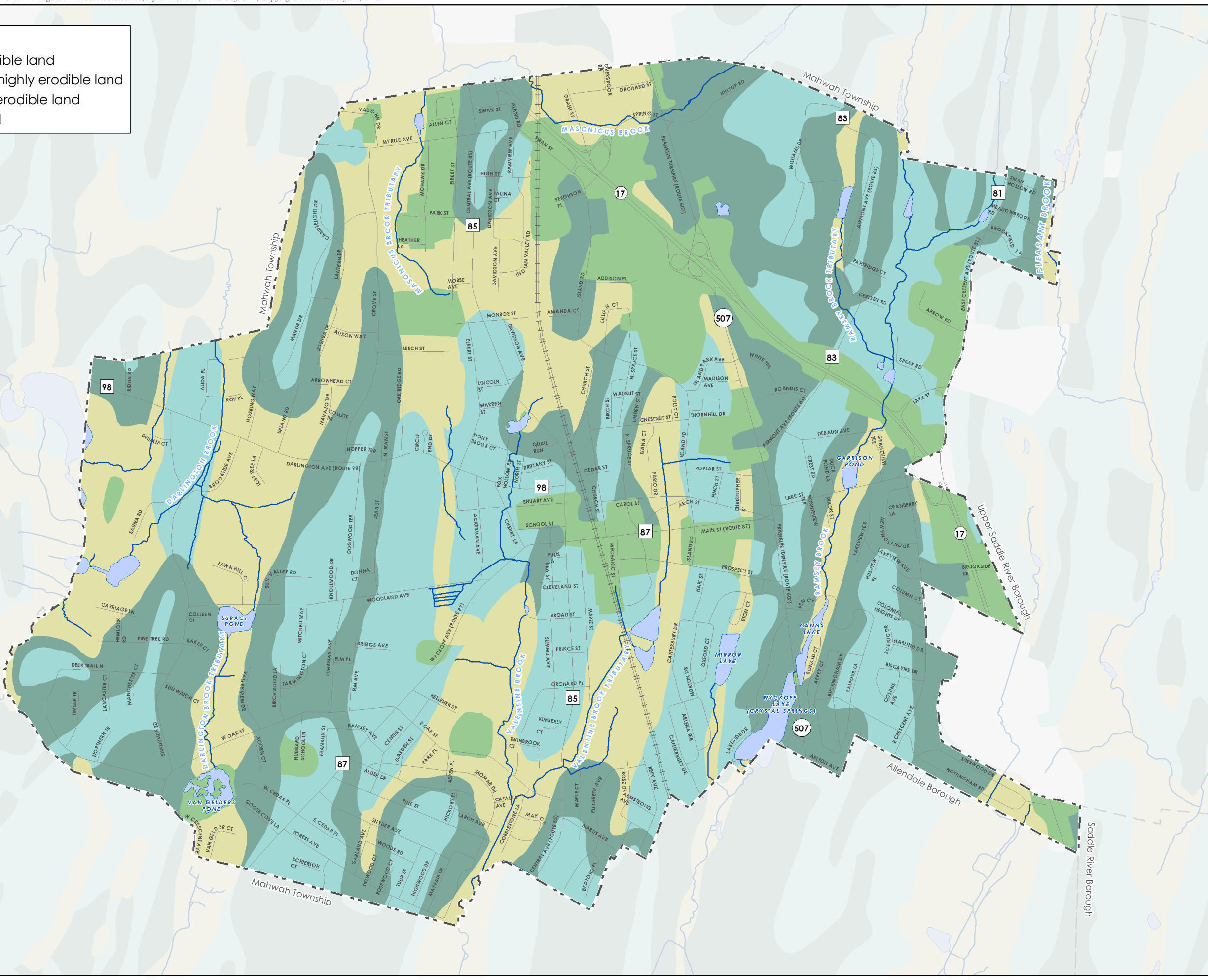
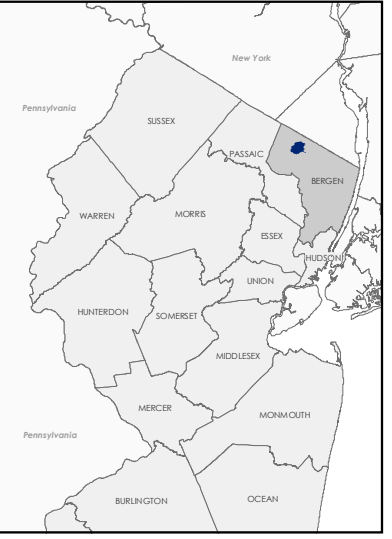


Erodible Soils

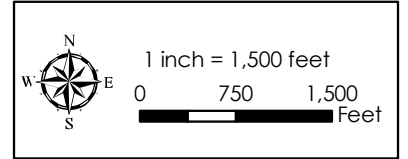
- Highly erodible land
- Potentially highly erodible land
- Not highly erodible land
- Unclassified



NEW JERSEY COUNTY MAP



PH PRINCETON HYDRO, LLC.
 1108 OLD YORK ROAD
 P.O. BOX 720
 RINGOES, NJ 08551



- NOTES:**
1. Municipal boundaries obtained from New Jersey Geographic Information Network website.
 2. Streams and lakes obtained from NJDEP GIS website.
 3. Roads obtained from Borough of Ramsey.
 4. Erodible Soils (USDA NRCS SSURGO soils) obtained from NJDEP GIS website.
- Map Projection: State Plane New Jersey (feet) NAD83

**MAP 12
ERODIBLE SOILS**

ENVIRONMENTAL
 RESOURCE
 INVENTORY
 BOROUGH OF RAMSEY
 BERGEN COUNTY, NJ

Legend

- Borough of Ramsey
- Road
- Commuter Rail
- Stream
- Lake
- Municipal Boundary