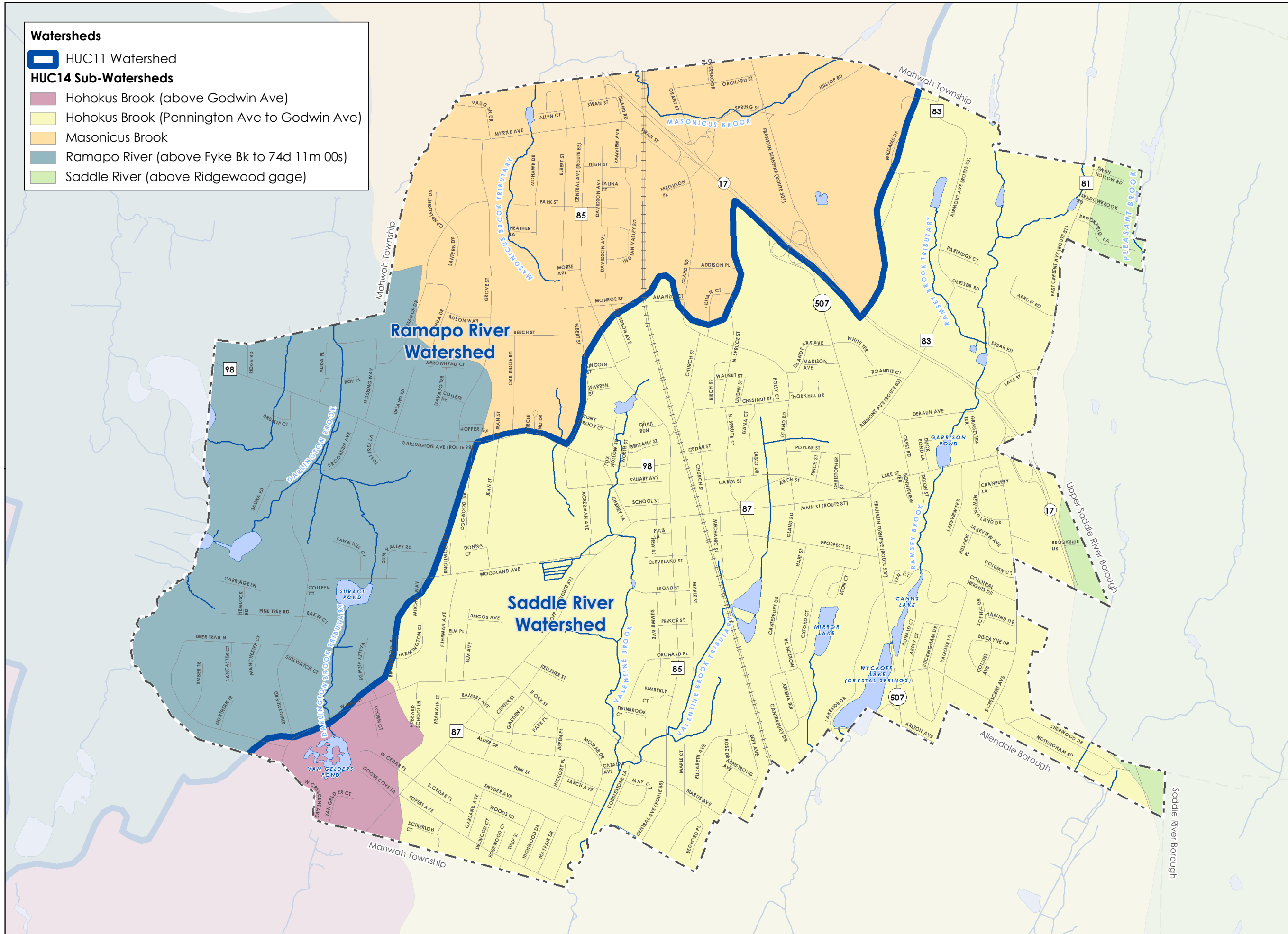


Watersheds

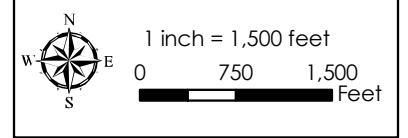
- HUC11 Watershed
- HUC14 Sub-Watersheds**
- Hohokus Brook (above Godwin Ave)
- Hohokus Brook (Pennington Ave to Godwin Ave)
- Masonicus Brook
- Ramapo River (above Fyke Bk to 74d 11m 00s)
- Saddle River (above Ridgewood gage)



NEW JERSEY COUNTY MAP



PH PRINCETON HYDRO, LLC.
 1108 OLD YORK ROAD
 P.O. BOX 720
 RINGOES, NJ 08551



- NOTES:**
1. Municipal boundaries obtained from New Jersey Geographic Information Network website.
 2. Watersheds (HUCs 11 & 14), streams, and lakes obtained from NJDEP GIS website.
 3. Roads obtained from Borough of Ramsey.
- Map Projection: State Plane New Jersey (feet) NAD83

**MAP 13
WATERSHEDS**



- Legend**
- Borough of Ramsey
 - Road
 - Commuter Rail
 - Stream
 - Lake
 - Municipal Boundary